

# RadOMA-NVIS High Resolution Spectroradiometer

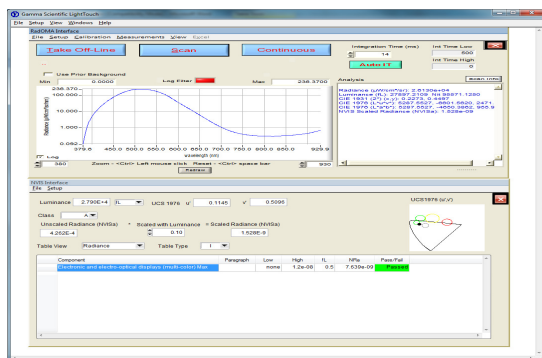
## PRODUCT SUMMARY

Gamma Scientific's RadOMA-NVIS is an advanced, high-speed spectroradiometer that combines the leading-edge sensitivity of backside-thinned CCD detector technology with Gamma Scientific's industry-renowned RadOMA opto-electrical platform. The RadOMA-NVIS is specifically configured for ANVIS testing of cockpit displays and lighting. It exceeds all requirements outlined in MIL-L-85762A and MIL-STD-3009

The RadOMA-NVIS represents the state-of-the-art in speed and accuracy in a commercially available spectroradiometer. Measurements that required a few minutes in the past with scanning grating spectroradiometer systems can now be performed in a matter of seconds.

The front-end optical system is configured with the RadOMAcam® viewing system which back-projects the measurement aperture onto the DUT for easy alignment in the test fixture and allows it to be viewed remotely on the computer screen. The measurement aperture is perpendicular to the optical axis so the entire aperture is in focus on the DUT.

Part of the RadOMA platform family – a durable opto-electrical design proven in hundreds of facilities worldwide – the RadOMA-NVIS shares the same feature-rich functionality as its siblings which includes: automatic dynamic range optimization that ensures system electrical gains are always set for the best results; USB 2.0 interface; and Gamma Scientific's powerful Light Touch NVIS spectral data acquisition and analysis software package for Windows 7 64-bit. The RadOMA-NVIS configuration covers 380-930 nm or 380-1100 nm and includes 6 different field-of-view apertures.

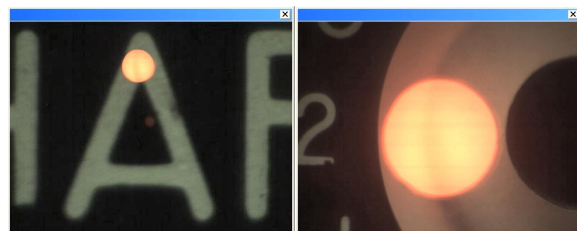


Gamma Scientific's powerful Light Touch Analysis Software



## FEATURES

- Measurements down to  $0.00015 \text{ cd/m}^2$
- Exceptional accuracy via high-resolution bandwidth coverage
- Near-real-time measurement
- High resolution:  $0.6 \text{ nm/pixel}$
- Spectral range 380-930 nm or 380-1100 nm
- 6 aperture RadOMAcam® telescope which projects the actual measurement spot onto the DUT for easy alignment
- USB 2.0 interface
- Windows-based Light Touch NVIS control/analysis software
- NIST-traceable accuracy.
- Self-calibrated – **the system never has to be returned for calibration, eliminating cost and weeks of downtime.**
- Direct Excel export for data and graphs
- Pass/Fail reporting per MIL specifications



AVS Cam Screen Captures of DUT



# GAMMA SCIENTIFIC

8581 Aero Drive San Diego, CA 92123 Ph (858) 279-8034 Fax (858) 576-9286

Website: [www.gamma-sci.com](http://www.gamma-sci.com)

